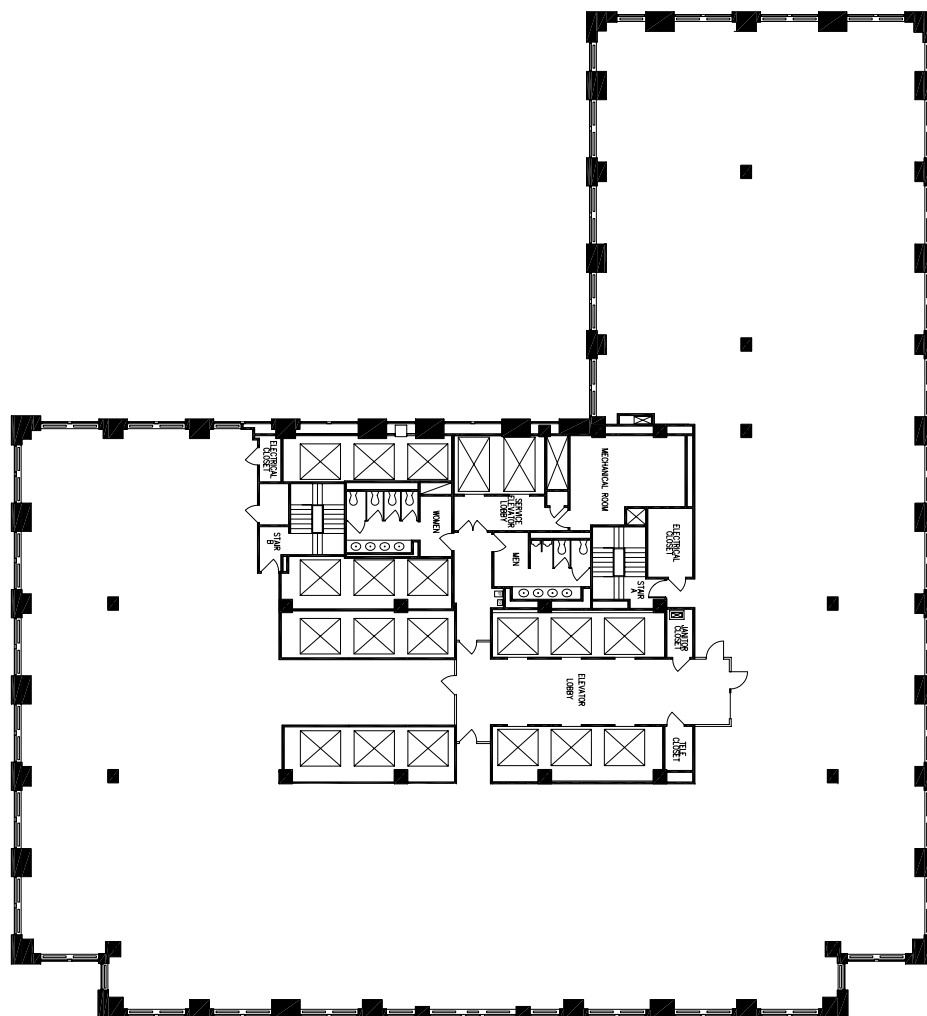




WEST 45TH STREET



WEST 46TH STREET

AVENUE OF AMERICAS



1177 AVENUE OF THE AMERICAS

NEW YORK, NEW YORK

Entire 16th Floor - 24,640 RSF

ALL INFORMATION IS FROM SOURCES DEEMED RELIABLE AND SUBMITTED SUBJECT TO ERRORS, OMISSIONS, CHANGES OF PRICE, RENTAL, PRIOR SALE AND WITHDRAWAL WITHOUT NOTICE.



7 World Trade Center/ 250 Greenwich Street
New York, NY 10007
P.212-732-9700/F.212-732-9708
www.silversteinproperties.com